

Gas Engine Driven Chillers

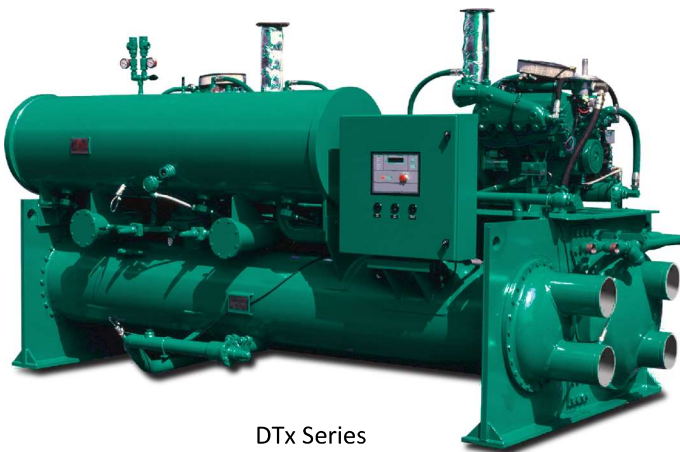


STx Series
150 & 200 Tons

Key Features & Benefits

- Operating costs reduced by 50%
- Ultra low NO_x and CO emissions
- Carbon footprint cut in half
- Avoid on-peak electric demand charges
- Nationwide factory service & support
- Free engine heat recovery
- OSHPD and IBC seismic certification
- ETL listed
- Internet-based Remote Monitoring Control System (RMCS)
- Integrated engine & exhaust heat recovery
- Powered by clean, economical natural gas
- Utility & State incentives available in some areas

Water-Cooled Models



DTx Series
300, 350 & 400 Tons

WATER-COOLED CHILLERS

Full Load Rating [tons]	
IPLV COP ²	
Full Load COP ²	
COP with Total Heat Recovery	
Fuel Consumption [MBtu/hr @ HHV 1020 Btu/scf]	
Fuel Consumption [scfh]	
Fuel Pressure [in. wc, 27.703 in. wc = 1 psig]	
Available Total Heat Recovery [MBtu/hr]	
Maximum Supply Temperature [°F]	

WATER SYSTEMS

Chilled Water Flow [GPM]	
Chilled Water Pressure Drop @ Rated Flow	
Total Cooling Tower Flow [GPM]	
- Flow To Condenser Only [GPM]	
- Flow To Dump HX Only [GPM]	
Condenser Pressure Drop @ Rated Flow	
Cooling Tower Heat Rejection [MBtu/hr]	

ELECTRICAL REQUIREMENT

Voltage Requirement	
Electrical Service	
Amperage Rating	
Parasitic Power Requirement [kW]	

ACOUSTIC LEVELS [dBa @ 3 ft]

- with Enclosure	
- without Enclosure	
Refrigerant	

DIMENSIONAL DATA

Length	
Width	
Height	

WEIGHTS

Rigging Weight [lb]	
Operational Weight [lb]	

DRIVELINE

Engine	
Compressor	

STx SERIES

CH-150x	CH-200x
150	200
2.6	2.6
1.7	1.6
2.2	2.1
1,032	1,526
1,012	1,496
7-28	13-28
516	730
214	229

360	480
9.1	16.2
490	640
450	600
40	40
13.0	23.1
2,418	3,473

208-230, 50/60 Hz
Single Phase with Neutral

30
2.2

85	89
92	96
HFC-134a	

13'10"
4'4"
6'9"

10,950
11,750

FELICE 7000
J&E Hall HS2024GED

DTx SERIES

CH-300x	CH-350x	CH-400x
300	350	400
2.6	2.6	2.6
1.7	1.7	1.6
2.1	2.1	2.1
2,157	2,529	3,052
2,115	2,479	2,992
7-28	13-28	13-28
1,032	1,210	1,460
214	220	229

720	840	960
7.2	9.6	12.6
980	1,130	1,280
900	1,050	1,200
80	80	80
12.9	14.1	18.1
5,376	6,136	6,946

208-230, 50/60 Hz
Single Phase with Neutral

40
2.7

88	89	92
95	96	99
HFC-134a		

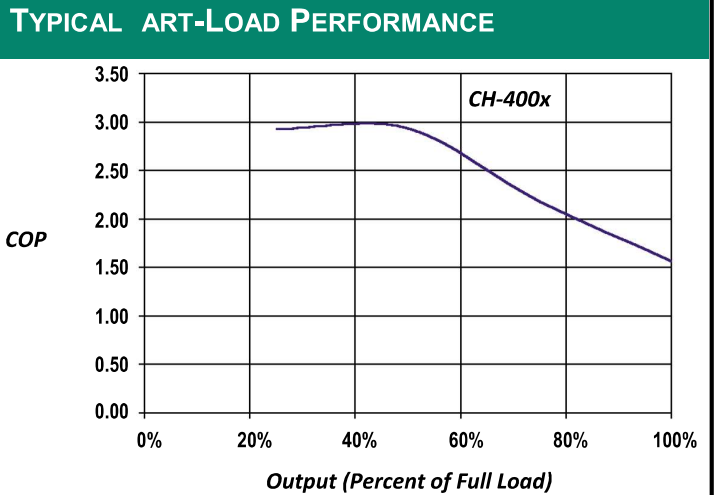
14'3"
7'0"
7'7"

21,900
23,650

FELICE 7040
J&E Hall HS2024GED (2)

Outstanding Features

- **FELICE Drive7000** natural gas engine
- Engine and exhaust heat recovery
- Single screw balance action compressor
- High efficiency flooded evaporator
- IPLV exceeding 2.5
- Footprint equivalent to electric chillers
- Variable engine speed operation for excellent part load performance and longer life
- **KRNET** microprocessor-based control system with precise PID control for fully automatic operation, continuous system monitoring, digital display, fault diagnostics and tie-in to an energy management system
- Remote Monitoring Control System (RMCS) that permits remote real-time monitoring, data acquisition and system control by telephone or internet



NOTES:

1. Specifications subject to change without notice, all specifications are $\pm 5\%$.
2. COP ratings are based upon Fuel Higher Heating Value (HHV) @ 1020 BTU/SCF